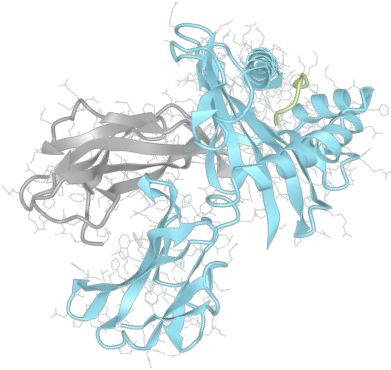


Product datasheet



sHLA-C*03:04bio

Cw*03:04, Cw*0304, C*0304, C0304
Cw0304, C*03, C03, Cw*03, Cw03, Cw10

Serological Name	Cw10
Peptide Load	Endogenous
Modification	Unmodified
Conjugation	Biotin
SKU	C0304bio

Product Description

Allele Name	C*03:04 B2m
HLA Class	HLA Class I
HLA Gene Locus	HLA-C
Alternative Allele Name A Chain	Cw*03:04, Cw*0304, C*0304, C0304, Cw0304, C*03, C03, Cw*03, Cw03, Cw10
Alternative Allele Name B Chain	-
Description	Recombinant, truncated Class I soluble Human Leukocyte Antigen (sHLA), naturally folded and glycosylated, loaded with endogenous peptides.
Serological Name	Cw10
Serological Split	Cw3
Bw4/Bw6 Assignment	Bw6
Bw4/Bw6 Sequence	SLRNLRG
Allele Frequency [World Population]	
A chain	7.4%
B chain	-

Associated products

[C0304](#)
[C0304pe](#)

Product Specification

Product name	HLA-C*03:04bio
HLA Species	Human
Host Cell Line Species	Human
Clone Designation	B4
Tail Specification	VLDL
Peptide Load	Endogenous
Modification	Unmodified
Conjugation	Biotin
Complexity	Monomer
Protein Format	Recombinant, truncated, soluble, non-modified, biotinylated, endogenously loaded
Storage Temperature	4 °C (This product should be stored undiluted)
Form	Liquid
Concentration	300.0 µg/µl
Formulation	PBS/0.02% Sodium Azide
pH	7.4
Purification Method	Affinity Chromatography
Grade	Research Use Only [RUO]
Authentication Verification	Sequence Based Typing

Protein Sequences

Alpha Chain Sequence	GSHSMRYFYT AVSRPGRGEP HFIAVGYVDD TQFVRFSDSA ASPRGEPRAP WVEQEGPEYW DRETQKYKRQ AQTDRVSLRN LRGYYNQSEA GSHIIQRMYG CDVGPDRLL RGYDQYAYDG KDYIALNEDL RSWTAADTAA QITQRKWEAA REAEQLRAYL EGLCWEVLRRL YLKNKQKQTLQ RAEHPKTHVT HHPVSDHEAT LRCWALGFYP AEITLTWQWD GEDQTQDTEL VETRPAGDGT FQKWAAVVVP SGEEQRYTCH VQHEGLPEPL TLRVSVSTDD DLA
Beta Chain Sequence	IQRTPKIQVY SRHPAENGKS NFLNCYVSGF HPSDIEVDLL KNGERIEKVE HSDLSFSKDW SFYLLYYTEF TPTEKDEYAC RVNHVTLSPQ KIVKWDRDM

Related Products

[C0302bio](#)
[C0303bio](#)
[A0201bio](#)
[B0702bio](#)

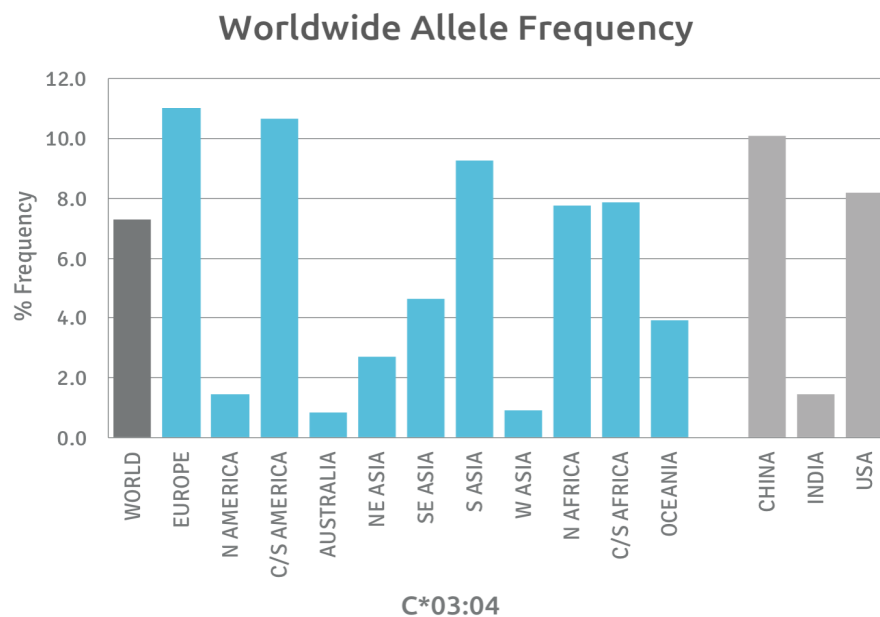
Applications

HLA Sandwich ELISAs
HLA Direct ELISAs
HLA-Sera Antibody Assays
HLA Controls in ELISA Assays
HLA Assay Standards
HLA Blocking Assays
HLA Neutralizing Assays
HLA Competition Assays
HLA Bead Assays
HLA Immunization Procedures

Recommended Antibodies

W6/32
Anti-B2m

Allele Frequency



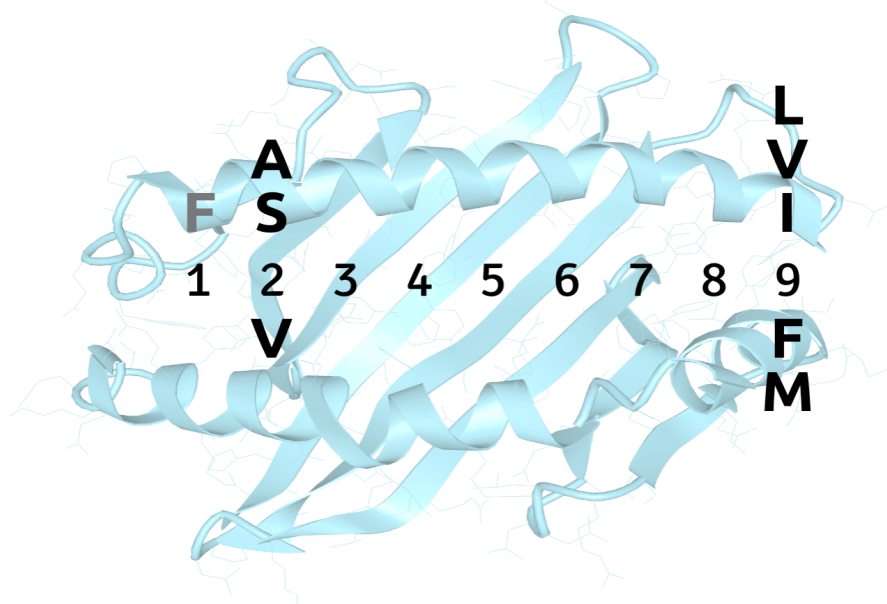
Please note:
ALL PRODUCTS ARE FOR RESEARCH USE ONLY. NOT FOR COMMERCIAL USE IN DIAGNOSTIC PROCEDURES.
For more information, please visit our Policies section on our website. For licensing inquiries, please contact

licensing@hlaprotein.com

 HLA Protein
PURE PROTEIN, LLC

Motif

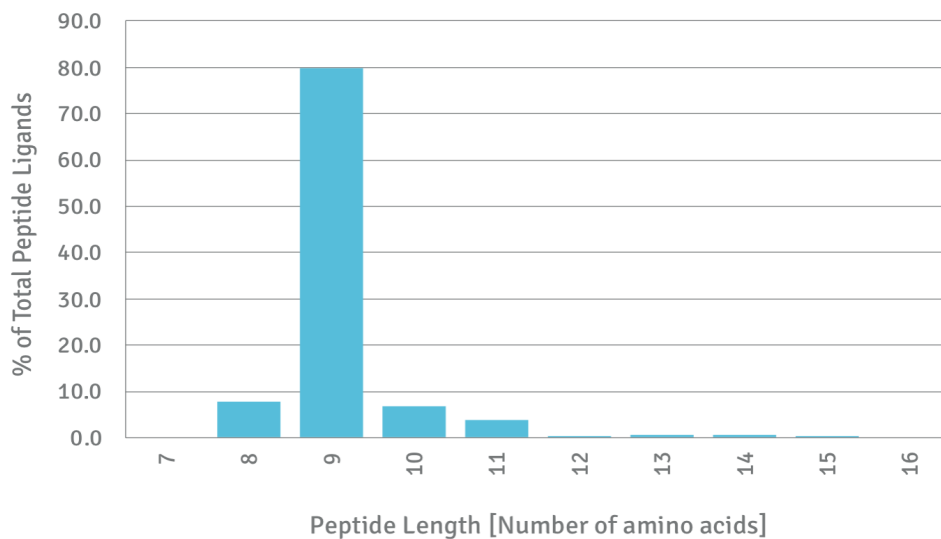
C*03:04 BINDING MOTIF



Length Distribution

HLA Length Distribution

C*03:04



Please note:

ALL PRODUCTS ARE FOR RESEARCH USE ONLY. NOT FOR COMMERCIAL USE IN DIAGNOSTIC PROCEDURES.

For more information, please visit our Policies section on our website. For licensing inquiries, please contact

licensing@hlaprotein.com

Eplet Assignments

C*03:04

Eplet	Polymorphic Residues	Antibody Reactivity
9Y	9Y	
11AV	11A12V	
21H	21H	Yes
65QKR	65Q66K69R	Yes
66K	66K	
69RT	69R73T	
73TVS	73T76V77S	Yes
76VRN	76V79R80N	Yes
76VS	76V77S	
77S	77S	
77SRN	77S79R80N	
80N	80N	Yes
94I	94I	
95I	95I	
97R	97R	
99Y	99Y	
113YD	113Y114D	
116Y	116Y	
152E	152E	
152RE	151R152E	
156L	156L	
163L	163L	
163LE	163L166E	
163LW	163L167W	Yes
173K	173K	Yes
184H	184H	
193PV	193P194V	Yes
194V	194V	
219W	219W	Yes

